

East Midlands Gateway Phase 2 (EMG2)

Document DCO 6.8C/MCO 6.8C

ENVIRONMENTAL STATEMENT

Technical Appendices

Appendix 8C

Modelled Human Receptor Locations

~~October 2025~~ April 2026

08

The East Midlands Gateway Phase 2
and Highway Order 202X and The East Midlands Gateway
Rail Freight and Highway (Amendment) Order 202X

[SEGRO.COM/SLPEMG2](https://www.segro.com/slpemg2)

SEGRO

**The East Midlands Gateway Phase 2 and
Highway Order 202X and the East Midlands Gateway
Rail Freight and Highway (Amendment) Order 202X**

**APPENDIX 8C – MODELLED HUMAN RECEPTOR
LOCATIONS**

(DOCUMENT DCO 6.8C/MCO 6.8C)

| <u>Version</u> | <u>Date</u> | <u>Status of Version</u> |
|-----------------------|----------------------------|---------------------------------|
| <u>0</u> | <u>October 2025</u> | <u>Submission</u> |
| <u>1</u> | <u>April 2026</u> | <u>Deadline 3</u> |

Appendix 8c – Human Receptor Locations

Table 8c.1: Residential Receptor Locations

| Receptor ID | X | Y | Z |
|-------------|----------|----------|-----|
| AB.R1 | 443844.6 | 322800.5 | 1.5 |
| AB.R2 | 442049.4 | 324392.3 | 1.5 |
| AB.R3 | 442357.5 | 324984.7 | 1.5 |
| AB.R4 | 442438.8 | 325143.3 | 1.5 |
| AB.R5 | 442522 | 325145.5 | 1.5 |
| AB.R6 | 442548.6 | 325146.9 | 1.5 |
| AB.R7 | 442932.6 | 325363.4 | 1.5 |
| AB.R8 | 443638.4 | 325396.3 | 1.5 |
| AB.R9 | 445305.3 | 325264.6 | 1.5 |
| AB.R10 | 446283.2 | 323893.3 | 1.5 |
| AB.R11 | 441896.6 | 325176.7 | 1.5 |
| AB.R12 | 444617.2 | 324569.6 | 1.5 |
| AB.R13 | 445322.4 | 324658.9 | 1.5 |
| AB.R14 | 445339.5 | 324633.8 | 1.5 |
| AB.R15 | 445348.8 | 324609.7 | 1.5 |
| AB.R16 | 445317.6 | 324537.1 | 1.5 |
| AB.R17 | 445316.1 | 324459.5 | 1.5 |
| AB.R18 | 445245.3 | 324203 | 1.5 |
| AB.R19 | 445194.2 | 324194.4 | 1.5 |
| CD.R1 | 448204 | 326379.2 | 1.5 |
| CD.R2 | 448307.6 | 326467.3 | 1.5 |
| CD.R3 | 448325 | 326729.3 | 1.5 |
| CD.R4 | 448340.4 | 326725 | 1.5 |
| CD.R5 | 448322.8 | 326740.2 | 1.5 |
| CD.R6 | 448330.3 | 326767 | 1.5 |
| CD.R7a | 448186.9 | 327124 | 1.5 |
| CD.R7b | 448187.6 | 327132.6 | 1.5 |

| Receptor ID | X | Y | Z |
|-------------|----------|----------|-----|
| CD.R8 | 448184.1 | 327035.7 | 1.5 |
| CD.R9 | 448708.4 | 327141.2 | 1.5 |
| CD.R10 | 448807.3 | 327197.1 | 1.5 |
| CD.R11 | 449135.9 | 327219.5 | 1.5 |
| CD.R12 | 448761.2 | 326899.4 | 1.5 |
| CD.R13 | 448786.7 | 326845.3 | 1.5 |
| CD.R14 | 448805.8 | 326701.6 | 1.5 |
| CD.R15 | 448809.2 | 326676.7 | 1.5 |
| CD.R16 | 448810.8 | 326653.4 | 1.5 |
| CD.R17 | 448808.5 | 326598.4 | 1.5 |
| CD.R18 | 448800.5 | 326635.4 | 1.5 |
| CD.R19 | 448803.4 | 326534.4 | 1.5 |
| CD.R20 | 448792.1 | 326526.3 | 1.5 |
| CD.R21 | 448798.2 | 326514.2 | 1.5 |
| CD.R22 | 449062.5 | 325960.4 | 1.5 |
| CD.R23 | 449213.5 | 325329.9 | 1.5 |
| CD.R24 | 449977.1 | 327744.3 | 1.5 |
| CD.R25 | 450065.6 | 327728.7 | 1.5 |
| CD.R26 | 450122.4 | 327709.5 | 1.5 |
| CD.R27 | 450357.6 | 327857.9 | 1.5 |
| CD.R28 | 450631.2 | 328107 | 1.5 |
| CD.R29 | 450035.7 | 326688.6 | 1.5 |
| CD.R30 | 450196.8 | 326683 | 1.5 |
| CD.R31 | 450278.5 | 326647.2 | 1.5 |
| CD.R32 | 450336.8 | 326213.6 | 1.5 |
| CD.R33 | 451547.1 | 326379.3 | 1.5 |
| CD.R35 | 452291.3 | 326140.9 | 1.5 |
| CD.R36 | 448266.1 | 328104 | 1.5 |
| CD.R37 | 446024 | 329446.7 | 1.5 |
| EF.R1 | 449858.5 | 322694.7 | 1.5 |

| Receptor ID | X | Y | Z |
|-------------|----------|----------|-----|
| EF.R2 | 449990.7 | 322278.2 | 1.5 |
| EF.R3 | 450011 | 322252.5 | 1.5 |
| EF.R4 | 450077 | 322034.8 | 1.5 |
| EF.R5 | 450486.1 | 321764.3 | 1.5 |
| EF.R6 | 450199.9 | 322284.2 | 1.5 |
| EF.R7 | 449946 | 322231.7 | 1.5 |
| EF.R8 | 450857.2 | 321167 | 1.5 |
| EF.R9 | 451661.6 | 321049.8 | 1.5 |
| EF.R10 | 452145.2 | 320814.3 | 1.5 |
| EF.R11 | 452159.5 | 320789.5 | 1.5 |
| EF.R12 | 452202.5 | 320731.7 | 1.5 |
| EF.R13 | 452248.4 | 320735.5 | 1.5 |
| EF.R14 | 452317.6 | 320727.3 | 1.5 |
| EF.R15 | 452597.5 | 320607.5 | 1.5 |
| EF.R16 | 450639.4 | 323469.1 | 1.5 |
| EF.R17 | 450742.2 | 323483.5 | 1.5 |
| EF.R18 | 450828.4 | 323495.8 | 1.5 |
| EF.R19 | 451510.3 | 324062.3 | 1.5 |
| EF.R20 | 453143.7 | 324820.7 | 1.5 |
| GLN.R1 | 446680.7 | 332141.9 | 1.5 |
| GLN.R2 | 447278.9 | 333241 | 1.5 |
| GLN.R3 | 447345.2 | 333671.9 | 1.5 |
| GLN.R4 | 447329.4 | 333773.2 | 1.5 |
| GLN.R5 | 447307.9 | 333993.6 | 1.5 |
| GLN.R6 | 447282.9 | 334116.2 | 1.5 |
| GLN.R7 | 447200.9 | 334563 | 1.5 |
| GLN.R8 | 446721.1 | 334275.6 | 1.5 |
| GLN.R9 | 447299.9 | 331490.8 | 1.5 |
| GLN.R10 | 447434.7 | 331502.4 | 1.5 |
| GLN.R11 | 447272.6 | 335198.6 | 1.5 |

| Receptor ID | X | Y | Z |
|-------------|----------|----------|-----|
| GLN.R12 | 447355.2 | 335591.2 | 1.5 |
| GLN.R13 | 447390 | 335645.6 | 1.5 |
| GLN.R14 | 447533.1 | 335735.6 | 1.5 |
| GLN.R15 | 444104 | 335260.8 | 1.5 |
| GLN.R16 | 447852.1 | 335899.6 | 1.5 |
| GLN.R17 | 447911.4 | 335900.7 | 1.5 |
| GLN.R18 | 447952.6 | 335931 | 1.5 |
| GLN.R19 | 447917.4 | 335980.2 | 1.5 |
| GLN.R20 | 447886.4 | 335972.5 | 1.5 |
| GLN.R21 | 447521.6 | 335823.3 | 1.5 |
| GLN.R22 | 447283.4 | 335773.4 | 1.5 |
| GLN.R23 | 447261.6 | 335793.1 | 1.5 |
| GLN.R24 | 446949.7 | 335651.1 | 1.5 |
| GLN.R25 | 447114.1 | 336118.8 | 9.5 |
| GLN.R26 | 445888.2 | 335384.2 | 1.5 |
| GLN.R27 | 445819.4 | 335625.5 | 1.5 |
| GLN.R28 | 444762.6 | 335527.5 | 1.5 |
| GLN.R29 | 444179.4 | 335145.5 | 1.5 |
| GLN.R30 | 443691.6 | 334990.4 | 1.5 |
| GLN.R31 | 442705.7 | 334506.8 | 1.5 |
| GLN.R32 | 442328.6 | 334335.4 | 1.5 |
| GLN.R33 | 442264.3 | 334313.8 | 1.5 |
| GLN.R34 | 442292.7 | 334312.5 | 1.5 |
| GLN.R35 | 441946.1 | 335300.9 | 1.5 |
| GLN.R36 | 447914.7 | 336404.9 | 0 |
| GLN.R37 | 447982 | 336380.9 | 4.5 |
| GLN.R38 | 448131.6 | 336368.8 | 1.5 |
| H.R1 | 440278.6 | 331502.7 | 1.5 |
| H.R2 | 440242.3 | 331645.3 | 1.5 |
| MN.R1 | 446965.2 | 323751.9 | 1.5 |

| Receptor ID | X | Y | Z |
|-------------|----------|----------|-----|
| MN.R2 | 447363.9 | 323697.4 | 1.5 |
| MN.R3 | 447385.4 | 323705.8 | 1.5 |
| MN.R4 | 447554.8 | 323635.8 | 1.5 |
| MN.R5 | 447563.7 | 323653.1 | 1.5 |
| MN.R6 | 447567.3 | 323639.5 | 1.5 |
| MN.R7 | 447775 | 323577.9 | 1.5 |
| MN.R8 | 447849.1 | 323538.4 | 1.5 |
| MN.R9 | 447874 | 323545.5 | 1.5 |
| MN.R10 | 447884 | 323560.5 | 1.5 |
| MN.R11 | 447870.4 | 323511.3 | 1.5 |
| MN.R12 | 447887.7 | 323514.2 | 1.5 |
| MN.R13 | 447884.4 | 323500.6 | 1.5 |
| MN.R14 | 447339.3 | 322923.6 | 1.5 |
| MN.R15 | 447389.3 | 322217 | 1.5 |
| OP.R1 | 437636.2 | 334129.1 | 1.5 |
| OP.R3 | 437675.2 | 334107 | 1.5 |
| OP.R2 | 437633.4 | 334112.5 | 1.5 |
| OP.R4 | 437717.2 | 334075.7 | 1.5 |
| OP.R5 | 437831.9 | 334013.8 | 1.5 |
| OP.R6 | 438146.9 | 333673.8 | 1.5 |
| OP.R7 | 438180.5 | 333635.5 | 1.5 |
| OP.R8 | 438565.9 | 333478.5 | 1.5 |
| OP.R9 | 438605.4 | 333250.2 | 1.5 |
| OP.R10 | 438614.8 | 333563.4 | 1.5 |
| OP.R11 | 439582 | 332430.7 | 1.5 |
| OP.R12 | 438905.1 | 332895.1 | 1.5 |
| OP.R13 | 438650.7 | 333277.8 | 1.5 |
| OP.R15 | 438835.1 | 335515.6 | 1.5 |
| OP.R16 | 438838.6 | 335540.8 | 1.5 |
| OP.R17 | 438874.5 | 335581.4 | 1.5 |

| Receptor ID | X | Y | Z |
|-------------|----------|----------|-----|
| OP.R18 | 439511.1 | 335628.5 | 1.5 |
| OP.R19 | 439592.5 | 335515.6 | 1.5 |
| OP.R20 | 439621.4 | 335559.5 | 1.5 |
| OP.R21 | 439584.5 | 335647.8 | 1.5 |
| OP.R22 | 439795.2 | 335652 | 1.5 |
| OP.R23 | 439741.7 | 335680.4 | 1.5 |
| OP.R24 | 439791.1 | 335702.1 | 1.5 |
| OP.R25 | 440040.1 | 335671.7 | 1.5 |
| OP.R26 | 440080.1 | 335698.2 | 1.5 |
| OP.R26 | 440162.5 | 335626.2 | 1.5 |
| OP.R27 | 440205.4 | 335650.9 | 1.5 |
| QR.R1 | 443973.0 | 327781.9 | 1.5 |
| QR.R2 | 444847.2 | 327457.2 | 1.5 |
| QR.R3 | 444845.5 | 327450.6 | 1.5 |
| QR.R4 | 445093.0 | 327522.6 | 1.5 |
| QR.R5 | 445167.0 | 327534.4 | 1.5 |
| QR.R6 | 444440.9 | 327226.4 | 1.5 |
| QR.R7 | 444513.3 | 327341.1 | 1.5 |
| QR.R8 | 444526.7 | 327339.6 | 1.5 |
| QR.R9 | 444541.7 | 327385.2 | 3 |
| QR.R10 | 444563.5 | 327392.9 | 1.5 |
| QR.R11 | 444550.6 | 327400.5 | 4.5 |
| QR.R12 | 444558.3 | 327410.0 | 4.5 |
| QR.R13 | 444581.0 | 327413.0 | 1.5 |
| QR.R14 | 444588.4 | 327422.0 | 1.5 |
| QR.R15 | 444593.9 | 327428.7 | 1.5 |
| QR.R16 | 444566.0 | 327416.9 | 4.5 |
| QR.R17 | 444570.7 | 327424.2 | 4.5 |
| QR.R18 | 444576.0 | 327431.6 | 4.5 |
| QR.R19 | 444584.0 | 327435.5 | 1.5 |

| Receptor ID | X | Y | Z |
|-------------|----------|----------|-----|
| QR.R20 | 444650.8 | 327497.9 | 1.5 |
| QR.R21 | 444642.5 | 327505.2 | 1.5 |
| QR.R22 | 444669.1 | 327534.7 | 1.5 |
| QR.R23 | 444673.5 | 327524.9 | 1.5 |
| QR.R24 | 444690.1 | 327580.3 | 1.5 |
| QR.R25 | 444727.4 | 327719.8 | 1.5 |
| QR.R26 | 444782.9 | 328112.0 | 1.5 |
| QR.R27 | 444747.5 | 327529.4 | 4.5 |
| QR.R28 | 444747.0 | 327737.4 | 1.5 |
| QR.R29 | 444663.0 | 327157.8 | 1.5 |
| QR.R30 | 444410.8 | 327172.7 | 1.5 |
| QR.R31 | 444411.2 | 327147.6 | 1.5 |
| QR.R32 | 444390.2 | 327138.5 | 1.5 |
| QR.R33 | 444376.6 | 327102.5 | 1.5 |
| QR.R34 | 444268.9 | 326920.0 | 1.5 |
| QR.R35 | 444281.9 | 326910.9 | 1.5 |
| QR.R36 | 444218.8 | 326807.1 | 1.5 |
| QR.R37 | 444078.1 | 326522.8 | 1.5 |
| QR.R38 | 445376.3 | 327585.2 | 1.5 |
| QR.R39 | 445569.2 | 327804.4 | 1.5 |
| QR.R40 | 445549.3 | 327897.8 | 1.5 |
| QR.R41 | 445549.7 | 327932.0 | 1.5 |
| QR.R42 | 445575.0 | 328101.6 | 1.5 |
| QR.R43 | 446690.8 | 328066.8 | 1.5 |
| QR.R44 | 446701.0 | 328098.5 | 1.5 |
| QR.R45 | 444718.1 | 327279.3 | 1.5 |
| QR.R46 | 444748.3 | 327326.8 | 1.5 |
| QR.R47 | 444768.2 | 327367.4 | 1.5 |
| QR.R48 | 444773.9 | 327393.1 | 1.5 |
| QR.R49 | 444786.5 | 327410.9 | 1.5 |

| Receptor ID | X | Y | Z |
|-------------|----------|----------|-----|
| QR.R50 | 444795.2 | 327408.1 | 1.5 |
| TK.R1 | 437672.7 | 317511.5 | 1.5 |
| TK.R2 | 438724.2 | 319268.5 | 1.5 |
| TK.R3 | 439626.1 | 320578.1 | 1.5 |
| TK.R4 | 442093.7 | 321802.9 | 1.5 |
| TK.R5 | 440988.5 | 322367.7 | 1.5 |
| TK.R6 | 440805.3 | 323013.7 | 1.5 |
| TK.R7 | 440797 | 322993.6 | 1.5 |
| TK.R8 | 440878.4 | 322945.3 | 1.5 |
| U.R1 | 449717.4 | 314830.7 | 1.5 |
| VW.R1a | 445157.5 | 318484.3 | 1.5 |
| VW.R1b | 445158.6 | 318491.9 | 1.5 |
| VW.R2 | 445328.3 | 318436.2 | 1.5 |
| VW.R3 | 445444.5 | 318486.1 | 1.5 |
| VW.R4 | 446397 | 317965.3 | 1.5 |
| VW.R5 | 446425.3 | 317915.3 | 1.5 |
| VW.R6 | 446971.4 | 317152.1 | 1.5 |
| VW.R7 | 448675.5 | 320144.9 | 1.5 |
| VW.R8 | 447568.5 | 319964.8 | 1.5 |
| VW.R9 | 447621.3 | 319979.8 | 1.5 |
| VW.R10 | 447643.2 | 319972.2 | 1.5 |
| VW.R11 | 447629.9 | 319933.2 | 1.5 |
| VW.R12 | 447653 | 319911.7 | 1.5 |
| VW.R13 | 447884.6 | 319786.3 | 1.5 |
| VW.R14 | 447880.2 | 319772.1 | 1.5 |
| VW.R15 | 447869.9 | 319749.2 | 1.5 |
| VW.R16 | 447871.5 | 319715.4 | 1.5 |
| VW.R17 | 447859.5 | 319709.3 | 1.5 |
| VW.R18 | 447861.5 | 319677.8 | 1.5 |
| VW.R19 | 447853 | 319666.6 | 1.5 |

| Receptor ID | X | Y | Z |
|-------------|----------|----------|-----|
| VW.R20 | 447856.5 | 319620 | 1.5 |
| VW.R21 | 447864.2 | 319604.8 | 1.5 |
| VW.R22 | 447876.2 | 319608.8 | 1.5 |
| VW.R23 | 447953.6 | 319579.5 | 1.5 |
| VW.R24 | 447968.7 | 319583.4 | 1.5 |
| VW.R25 | 447976.9 | 319557.2 | 1.5 |
| VW.R26 | 447972.1 | 319547.3 | 1.5 |
| VW.R27 | 447943.4 | 319503.9 | 1.5 |
| VW.R28 | 447744 | 319177.8 | 1.5 |
| VW.R29 | 447716 | 319148 | 1.5 |
| VW.R30 | 447710.3 | 319108.4 | 1.5 |
| VW.R31 | 447618.8 | 318839.2 | 1.5 |
| VW.R32 | 447655.7 | 318815.8 | 1.5 |
| VW.R33 | 447616.1 | 318782.8 | 1.5 |
| VW.R34 | 448174.6 | 318256.6 | 1.5 |
| VW.R35 | 448877.5 | 318306.8 | 1.5 |
| X.R1a | 448068.2 | 312949.4 | 1.5 |
| X.R1b | 448106.6 | 312938.9 | 1.5 |
| X.R2 | 448150.7 | 312925.5 | 1.5 |
| X.R3 | 448152 | 313006.7 | 1.5 |
| X.R4 | 449242 | 315228.6 | 1.5 |
| X.R5 | 448251.2 | 312511.9 | 1.5 |
| X.R6 | 448459.2 | 311610.3 | 1.5 |
| YZ.R1 | 444667.8 | 320978.8 | 1.5 |
| YZ.R2 | 444702.5 | 320906.2 | 1.5 |
| YZ.R3 | 444699.5 | 320872.4 | 1.5 |
| YZ.R4 | 444673.4 | 320815.6 | 1.5 |
| YZ.R5 | 444667.6 | 320761.9 | 1.5 |
| YZ.R6 | 444601.4 | 320505.8 | 1.5 |
| YZ.R7 | 444583.5 | 320435.5 | 1.5 |

| Receptor ID | X | Y | Z |
|-------------|----------|----------|-----|
| YZ.R8 | 444568.1 | 320414.2 | 1.5 |
| YZ.R9 | 444697.1 | 320819.4 | 1.5 |
| YZ.R10 | 443525.5 | 318611.1 | 1.5 |
| YZ.R11 | 443076.3 | 318132.5 | 1.5 |
| YZ.R12 | 443044 | 318115.6 | 1.5 |
| YZ.R13 | 445893.1 | 315548.9 | 1.5 |
| YZ.R14 | 446590.9 | 316304 | 1.5 |
| YZ.R15 | 446869.1 | 316533.4 | 1.5 |
| YZ.R16 | 441547 | 320204.9 | 1.5 |
| YZ.R17 | 441396.5 | 319100.8 | 1.5 |
| YZ.R18 | 441394.4 | 318779.8 | 1.5 |
| YZ.R19 | 441342.8 | 318401.6 | 1.5 |
| YZ.R20 | 441408.2 | 318207 | 1.5 |
| YZ.R21 | 441264 | 317656.3 | 1.5 |
| YZ.R22 | 441350.8 | 317477 | 1.5 |
| YZ.R23 | 441502.5 | 317511.1 | 1.5 |
| YZ.R24 | 441528.5 | 316929.6 | 1.5 |
| YZ.R25 | 441604.3 | 316816.3 | 1.5 |
| YZ.R26 | 443242.8 | 316381.6 | 1.5 |
| YZ.R27 | 443304.3 | 316330.7 | 1.5 |
| YZ.R28 | 443374.6 | 316269.8 | 1.5 |
| YZ.R29 | 443535.5 | 316098.6 | 1.5 |
| YZ.R30 | 443607.8 | 316054.1 | 1.5 |
| YZ.R31 | 443610 | 315999.5 | 1.5 |
| YZ.R32 | 443650.9 | 315999.8 | 1.5 |
| YZ.R33 | 443690.4 | 315953.7 | 1.5 |
| YZ.R34 | 443648.7 | 316020.7 | 1.5 |
| YZ.R35 | 443622.7 | 315998.9 | 1.5 |

Table 8c.2: School Receptor Locations

| Receptor ID | X | Y | Z |
|-------------|----------|----------|-----|
| AB.S1 | 445314.5 | 324720.4 | 0.8 |
| CD.S1 | 448479.5 | 326695.8 | 0.8 |
| QR.S1 | 444675.8 | 327197.9 | 0.8 |
| QR.S2 | 445585.9 | 328082.2 | 0.8 |
| VW.S1 | 447680.2 | 319044.8 | 0.6 |
| YZ.S1 | 441396.6 | 318562.8 | 0.8 |

Table 8c.3: Care Home Receptor Locations

| Receptor ID | X | Y | Z |
|-------------|----------|----------|-----|
| OP.CH1 | 438622.6 | 333324 | 1.5 |
| OP.CH2 | 438944.9 | 332895.7 | 1.5 |
| QR.CH1 | 444607.9 | 327161.2 | 1.5 |

Table 8c.4: Medical Receptor Locations

| Receptor ID | X | Y | Z |
|-------------|----------|----------|-----|
| OP.MC1 | 438280.2 | 333564 | 1.5 |
| VW.MC1 | 447904.2 | 319589.2 | 1.5 |
| YZ.MC.1 | 444672.1 | 320859.7 | 1.5 |

Figure 8c.1: Modelled Receptor Locations – Disworth

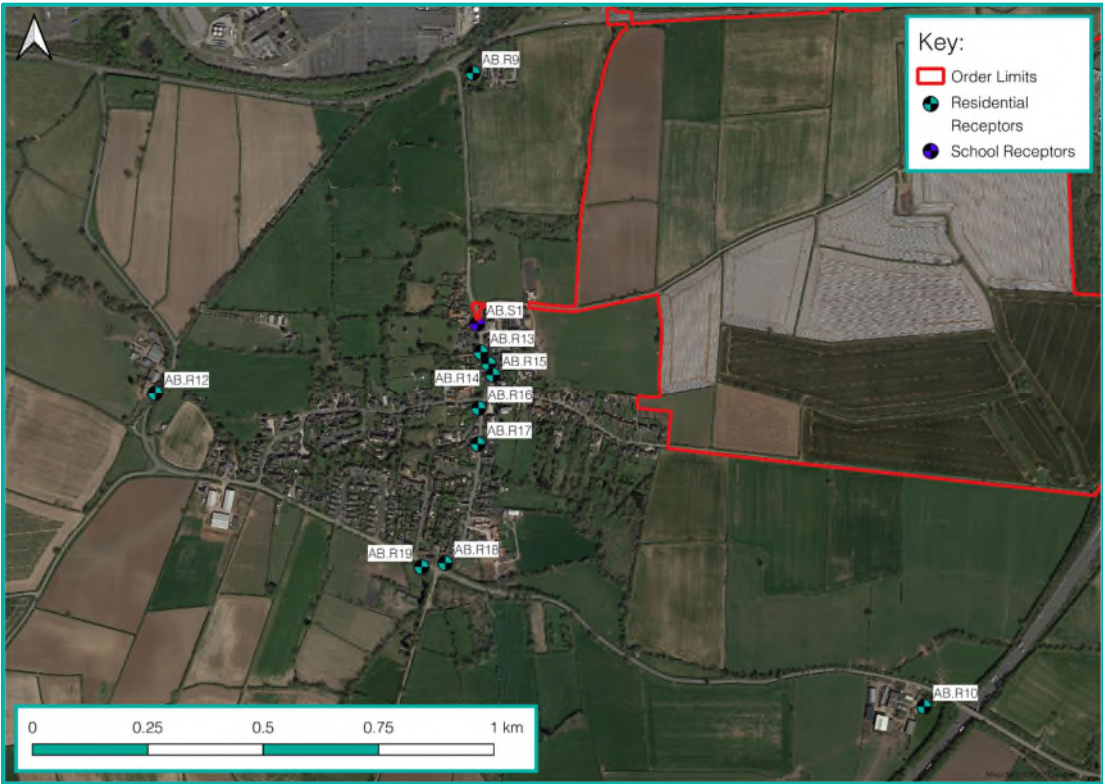


Figure 8c.2: Modelled Receptor Locations – Isley Walton



Figure 8c.3: Modelled Receptor Locations – Kingston on Soar



Figure 8c.4: Modelled Receptor Locations – Derby Southern Bypass / A453



Figure 8c.5: Modelled Receptor Locations – Kegworth



Figure 8c.6: Modelled Receptor Locations – Hathern / Zouch



Figure 8c.7: Modelled Receptor Locations – Loughborough



Figure 8c.8: Modelled Receptor Locations – Sandiacre / Risley



Figure 8c.9: Modelled Receptor Locations – Long Eaton



Figure 8c.10: Modelled Receptor Locations – Borrowwash



Figure 8c.11: Modelled Receptor Locations – Boulton Moor, Alvaston



Figure 8c.12: Modelled Receptor Locations – Long Whatton



Figure 8c.13: Modelled Receptor Locations – Smythy Lane, Long Whatton



Figure 8c.14: Modelled Receptor Locations – Spondon



Figure 8c.15: Modelled Receptor Locations – Alvaston



Figure 8c.16: Modelled Receptor Locations – Hemington



Figure 8c.17: Modelled Receptor Locations – Lockington



Figure 8c.18: Modelled Receptor Locations – Castle Donington Central



Figure 8c.19: Modelled Receptor Locations – Castle Donington South



Figure 8c.20: Modelled Receptor Locations – Castle Donington North



Figure 8c.21: Modelled Receptor Locations – Breedon on the Hill



Figure 8c.22: Modelled Receptor Locations – Woodhouse Eaves



Figure 8c.23: Modelled Receptor Locations – Northeast Shepshed



Figure 8c.24: Modelled Receptor Locations – Northwest Shepshed



Figure 8c.25: Modelled Receptor Locations – Shepshed Town Centre



Figure 8c.26: Modelled Receptor Locations – Charnwood Road, Shepshed



Figure 8c.27: Modelled Receptor Locations – Ashby Road East, Shepshed



Figure 8c.28: Modelled Receptor Locations – Blackbrook / Finney Hill



Figure 8c.29: Modelled Receptor Locations – Nanpantan



Figure 8c.30: Modelled Receptor Locations – Copt Oak

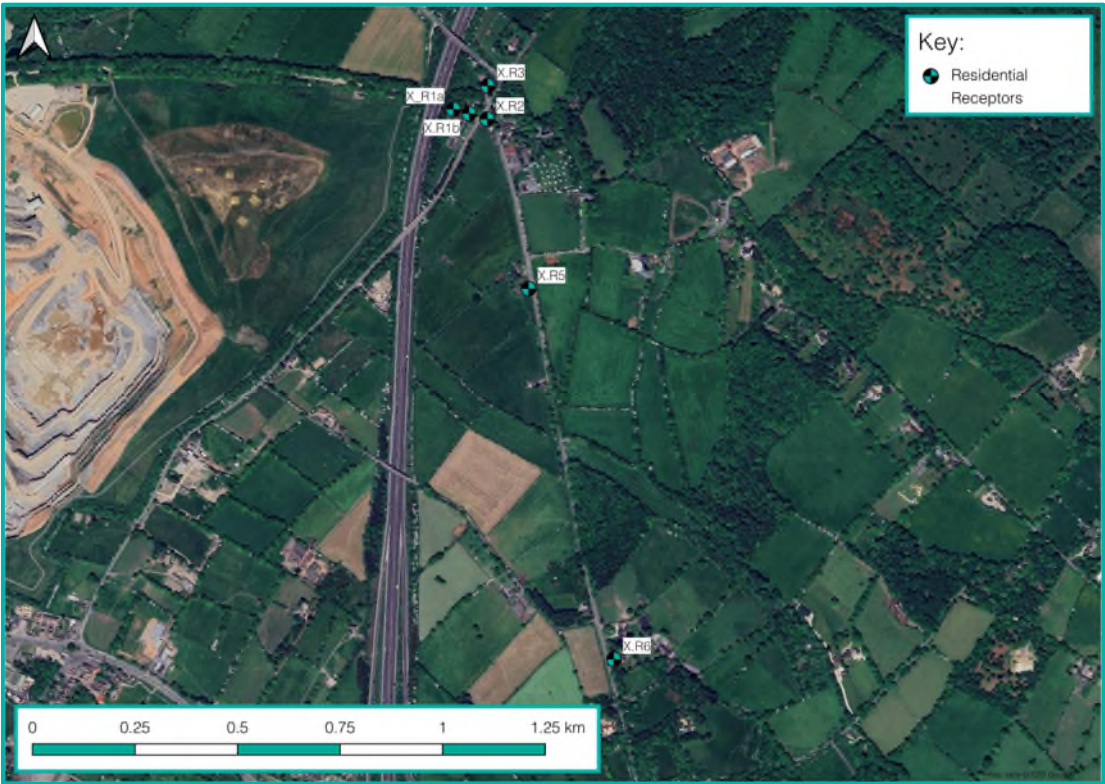


Figure 8c.31: Modelled Receptor Locations – Belton



Figure 8c.32: Modelled Receptor Locations – Thringstone / Griffydam / Worthington



Figure 8c.33: Modelled Receptor Locations – Peggs Green / Swannington



Figure 8c.34: Modelled Receptor Locations – Whitwick



Figure 8c.35: Modelled Receptor Locations – Abbey Road, Coalville



Table 8c.5: Indicative Future Receptor Locations

| Receptor ID | X | Y | Z |
|-------------|----------|----------|-----|
| ABS.C1 | 445783.3 | 325351.8 | 1.5 |
| ABS.C2 | 446022.9 | 325353.4 | 1.5 |
| ABS.C3 | 446164.8 | 325376.4 | 1.5 |
| ABS.C4 | 446299.5 | 325377.2 | 1.5 |
| ABS.C5 | 446508.6 | 325401.1 | 1.5 |
| ABS.C6 | 446660.4 | 325405 | 1.5 |
| ABS.C7 | 446661.6 | 324500.1 | 1.5 |
| ABS.C8 | 446678.3 | 324676.9 | 1.5 |

Figure 8c.36: Modelled Indicative Future Commercial Receptor Locations



Table 8c.6: Equality Receptor Locations

| Receptor ID | X | Y | Z |
|-------------|----------|----------|-----|
| OS1 | 445323.8 | 324400.8 | 1.5 |
| OS10 | 445361.4 | 324536.5 | 1.5 |
| OS13 | 445303 | 324677.5 | 1.5 |
| OS2 | 444976.7 | 327509.6 | 1.5 |
| OS3 | 444712.8 | 327451 | 1.5 |
| OS4 | 444677.7 | 327298.4 | 1.5 |
| OS6 | 444640.6 | 327148.7 | 1.5 |
| OS7 | 444697 | 327452.9 | 1.5 |
| OS11 | 444701.1 | 327202.3 | 1.5 |
| OS12 | 444616.4 | 327296.1 | 1.5 |
| OS14 | 444784.4 | 327515.8 | 1.5 |
| LCC3 | 446726.3 | 330281.2 | 1.5 |

Figure 8c.37: Modelled Equality Receptor Locations – Diseworth



Figure 8c.37: Modelled Equality Receptor Locations – Castle Donington



Figure 8c.38: Modelled Equality Receptor Locations – Sawley



An overview of the study area as a whole, with the areas, labelled in line with the receptor prefixes found in the above tables, is illustrated in Figure 8c.3940. To note, the Order Limits are not shown on this image for ease of viewing. This figure also labels key places within the study area.

Figure 8c.3940: Study Area

